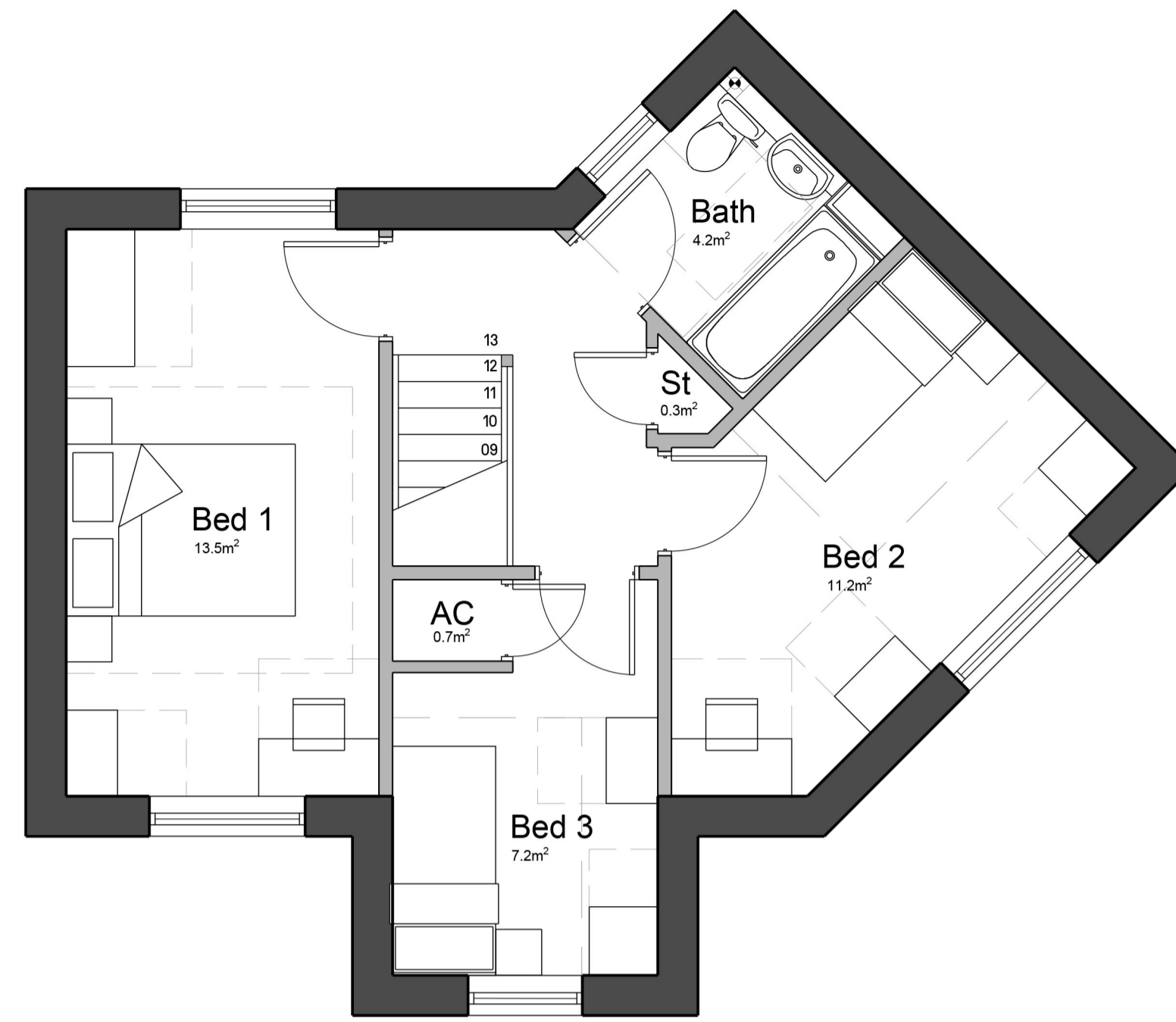


GROUND FLOOR - 42.0m²

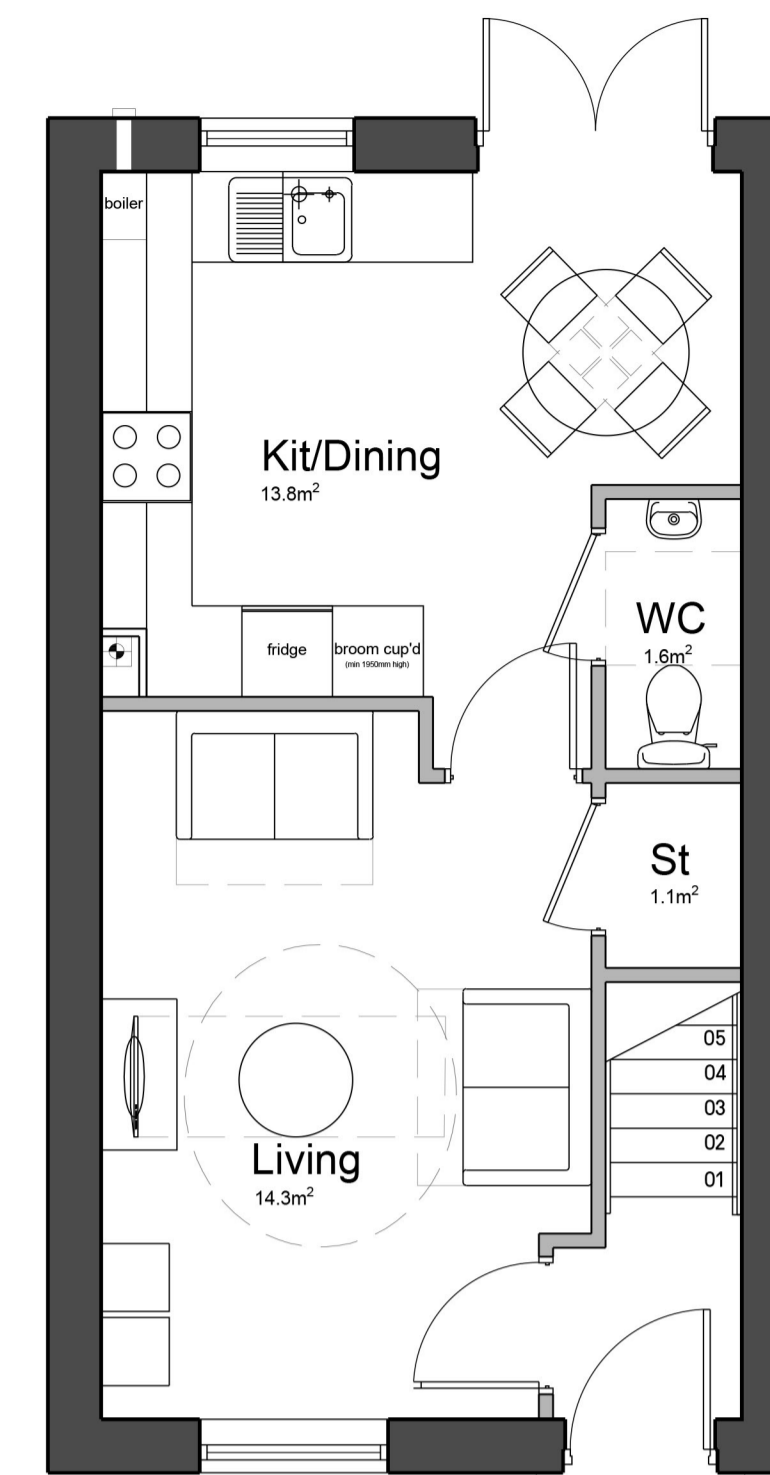


FIRST FLOOR - 45.5m²

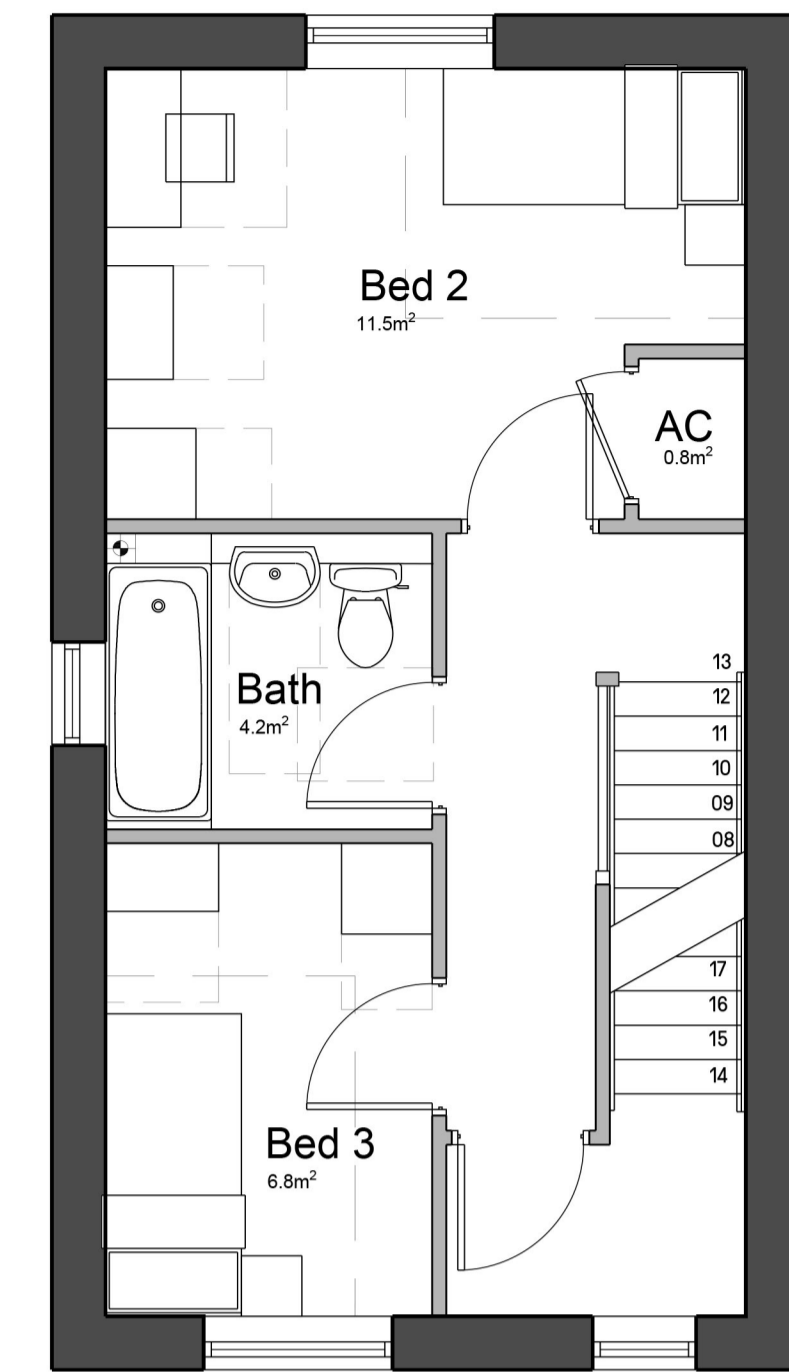


House Type 3A
3 Bed / 4 Person House
Area: 87.50m² (941.8 sqft)

Please Note: Window positions and sizes are indicative subject to detailed elevation design



GROUND FLOOR - 35.0m²



FIRST FLOOR - 35.0m²



House Type 3B
3 Bed / 4 Person House
Area: 90.00m² (969 sqft)



ELEVATION A 10

House Type 3A
3 Bed / 4 Person House

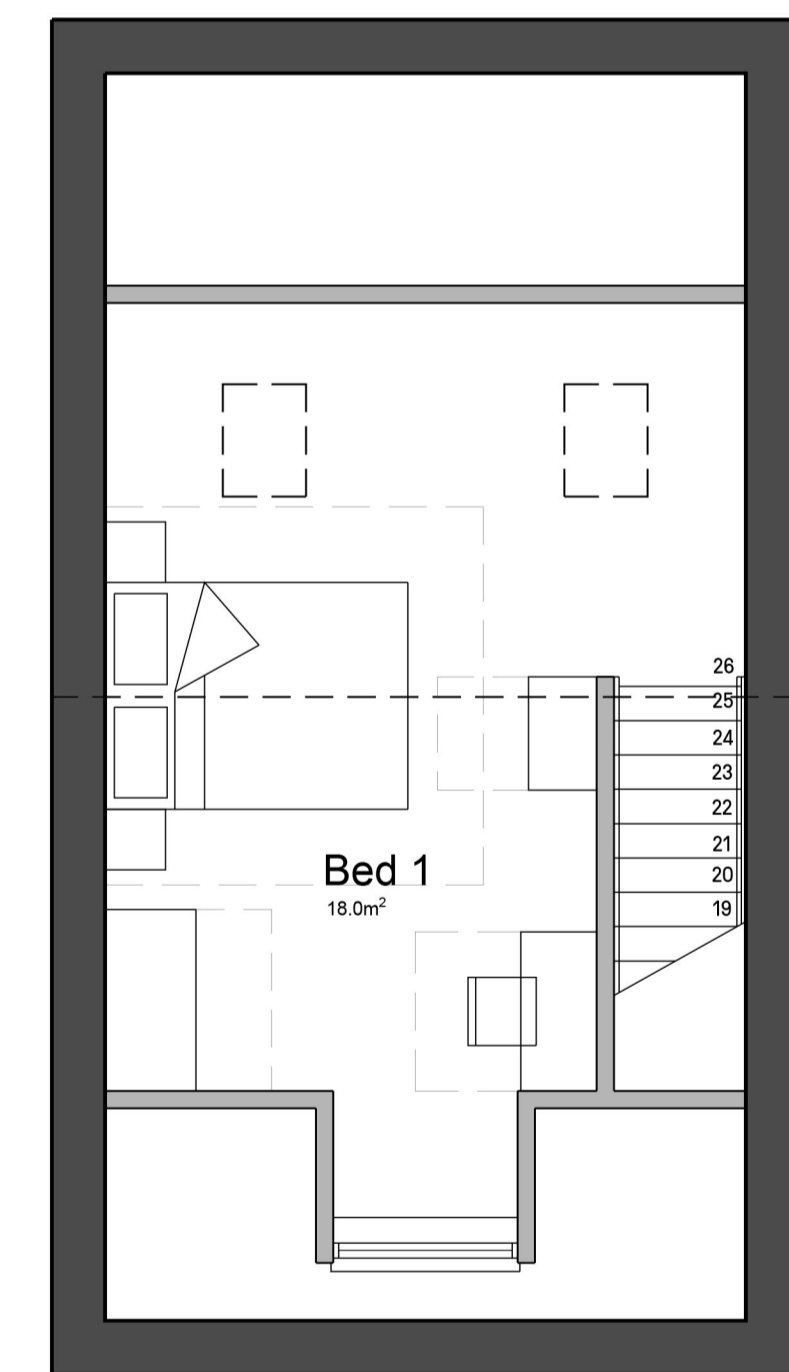
Materials List

1. Red Brick
2. Projecting Red Brick
3. Red Brick Soldier Course
4. White Render
5. Grey UPVC Window
6. Grey UPVC Fascia
7. Grey Concrete Interlocking Tiles to Roof
8. Grey UPVC Rainwater Goods
9. Grey Box Canopy
10. UPVC Door
11. Brick Ladder Detail



ELEVATION A 10

House Type 3B
3 Bed / 4 Person House



SECOND FLOOR - 20.0m²

Notes - Copyright in this drawing remains the property of BM3 Architecture Limited. - Do not scale this drawing. Work to figured dimensions only. - Contractors and consultants are to advise BM3 Architecture Limited of any discrepancies.	Revision /	Date	By	Chkd	CDM Notes	Project GLEBE STREET TELFORD	Drawing DRAFT HOUSE TYPE ELEVATIONS	Client LOVELL	BM3		
		XX.08.21	TC	PS						Scale 1:100@A1	Dated AUG 21